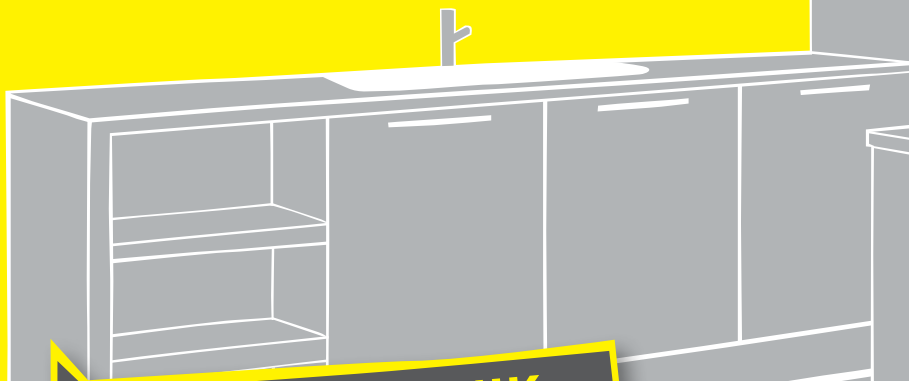
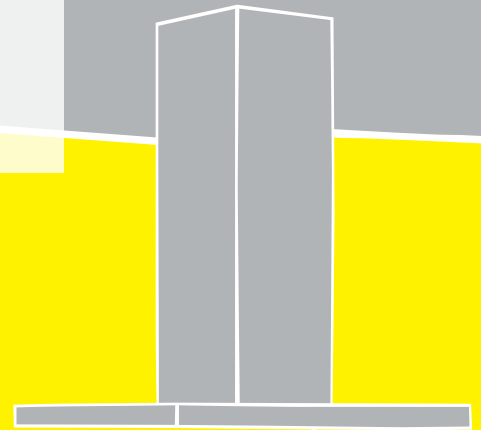


alplex-duo XS / F50 PROFI®

**Multilayer composite pipe system for
drinking water and heating installations
in dimensions between 16 and 32 mm**



**HAUSTECHNIK
VOM
SPEZIALISTEN**



**DRAINAGE SYSTEMS
ELECTRICAL SYSTEMS
BUILDING TECHNOLOGY
INDUSTRIAL PRODUCTS**



alpex-duo XS / F50 PROFI® - flow-optimised complete system

alpex-duo XS pipe



High-quality multilayer composite pipes

The various alpex-duo XS composite pipe designs are of utmost quality, flexible and practice-oriented, with internally cross-linked materials and a butt-welded aluminium core (PE-X/AL/PE-HD).

A combination that ensures ideal processing and superior operational reliability.

Whether as flexible coiled pipes, stable straight lengths, pre-insulated multilayer composite pipes, or pipes with protective sheathing - the installation is easy and time-saving!

- Corrosion-resistant
- Good compatibility with other materials
- High chemical resistance
- 100 % impermeable to oxygen
- Favourable rheological properties
- Low thermal linear expansion, comparable with copper

alpex F50 PROFI fitting



High-quality fittings

alpex F50 PROFI fittings provide the specialists with a suitable solution for every installation situation. The ingenious fitting design and comprehensive selection in dimensions between 16 and 32 mm ensure the highest flexibility of processing options.

- Flow-optimised: 30 % larger cross section surface
- Crimping jaw flexibility: 1 fitting – 5 possible crimping contours
- Leak function
- Superior materials
- Fittings manufactured from high-performance PPSU plastic or dezincification-resistant lead-free brass CW724R
- Large inspection hole for verifying correct positioning

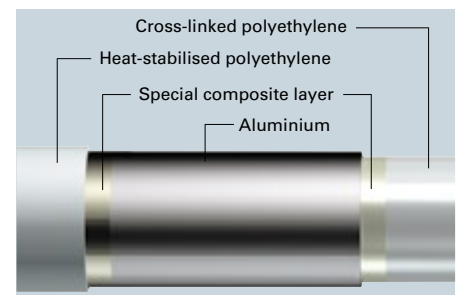


Technical data

System				
DN	12	15	20	25
Dimension [mm]	16 x 2.0	20 x 2.0	26 x 3.0	32 x 3.0
Operating temperature [°C]	max. 95 (permanent)			
Operating pressure [bar]	max. 10			
Material class DIN EN 13501-1	E			
Applications	Drinking water and heating installations			



Multilayer composite pipe – alpex-duo XS	
Material	PE-X/AL/PE-HD
Thermal conductivity [W/(m•K)]	0.45
Expansion [mm/(m•K)]	0.026



alpex F50 PROFI fitting	
Material	Polyphenylsulfon (PPSU) / dezincification-resistant lead-free brassCW724R
Crimp sleeve	Stainless steel
Crimping contour	F – U – TH – H – VP
Leak function acc. to W534	Yes





Drinking water hygiene

Enjoy greater flow rate







alplex F50 PROFI is reliable in every way! These fittings with up to 30 % larger cross section surface boast the largest inside diameter among all comparable radial crimp fittings for multilayer composite pipes in the German market.

No chance for germs

Drinking water is of great value to our life and health. This is why it requires particularly thorough protection against microbiological contamination.

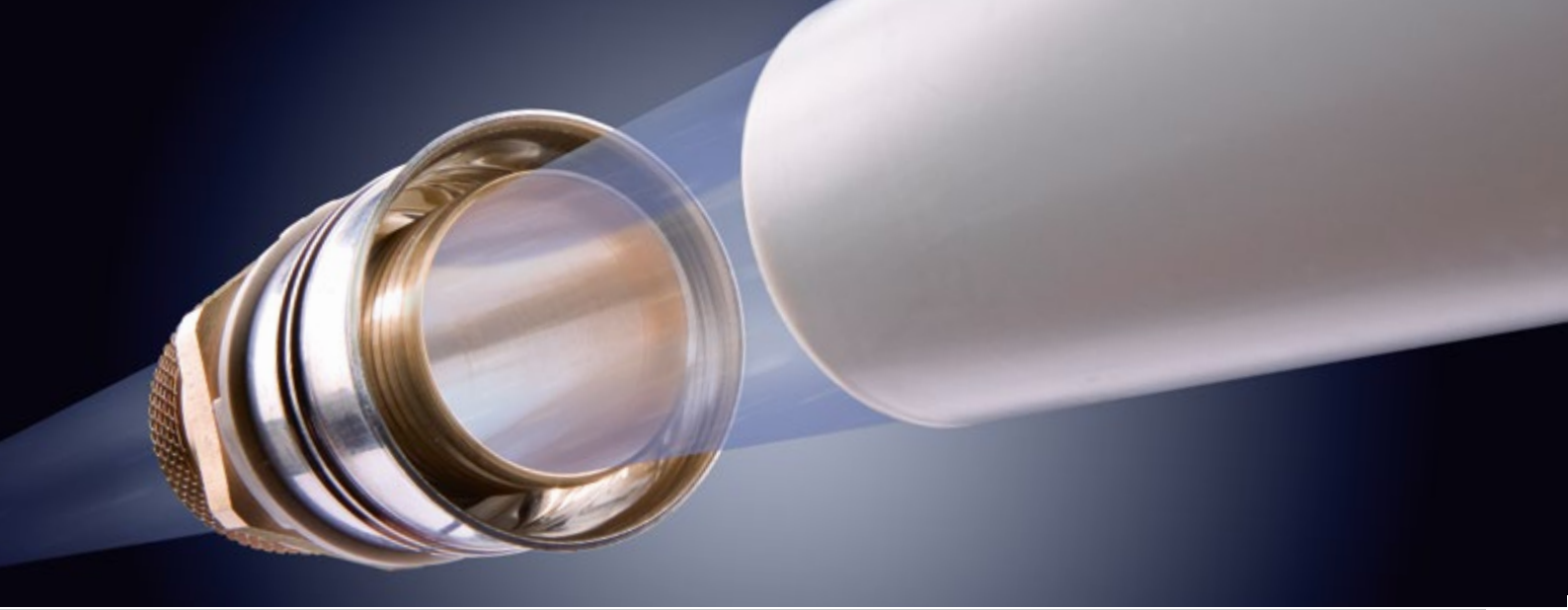
Optimal dimensioning of pipe systems during planning, high-quality materials and responsible system operators are the best prerequisites for hygienically impeccable drinking water installations.

Comparison of material qualities

					
	PPSU Highperformance plastic	CW724R Dezincification-resistant brass	CC770S Dezincification-resistant brass	CC499K Red brass	CW617N Standard tin-coated brass
UBA TrinkwV Complies with 4MS Composition List of accepted metallic materials	✓	✓	✓	✓	✓
Dezincification-resistant	✓	✓	✓	✓	✗
	✓	✓	✗	✗	✗
Lead content	0 %	≤0,1 %	≤1,6 %	≤3,0 %	≤2,2 %

Controlled safety





Benefits at a glance

The alpex-duo XS / F50 PROFI system is extremely durable and convincing due to its high load capacity and hygienic safety. All flow-optimised pipes and fittings can be installed in a

space-saving manner, are easy to insulate and resistant to hot water of up to 95 °C. Utmost user-friendliness and efficient operation coupled with quality and highest possible safety – these

are the goals we pursue and guarantee with our ongoing practice-oriented further developments.



30 % LARGER
CROSS SECTION



CRIMPING JAW
FLEXIBILITY



HYGIENICALLY SOUND



COMPLIANCE WITH
GERMAN ENVIRONMENT
AGENCY / DRINKING
WATER ORDINANCE



95 °C
HIGH CONTINUOUS
OPERATING TEMPERATURE



LEAK FUNCTION



SUPERIOR
MATERIAL QUALITY



DURABILITY



SYSTEM
COMPATIBILITY



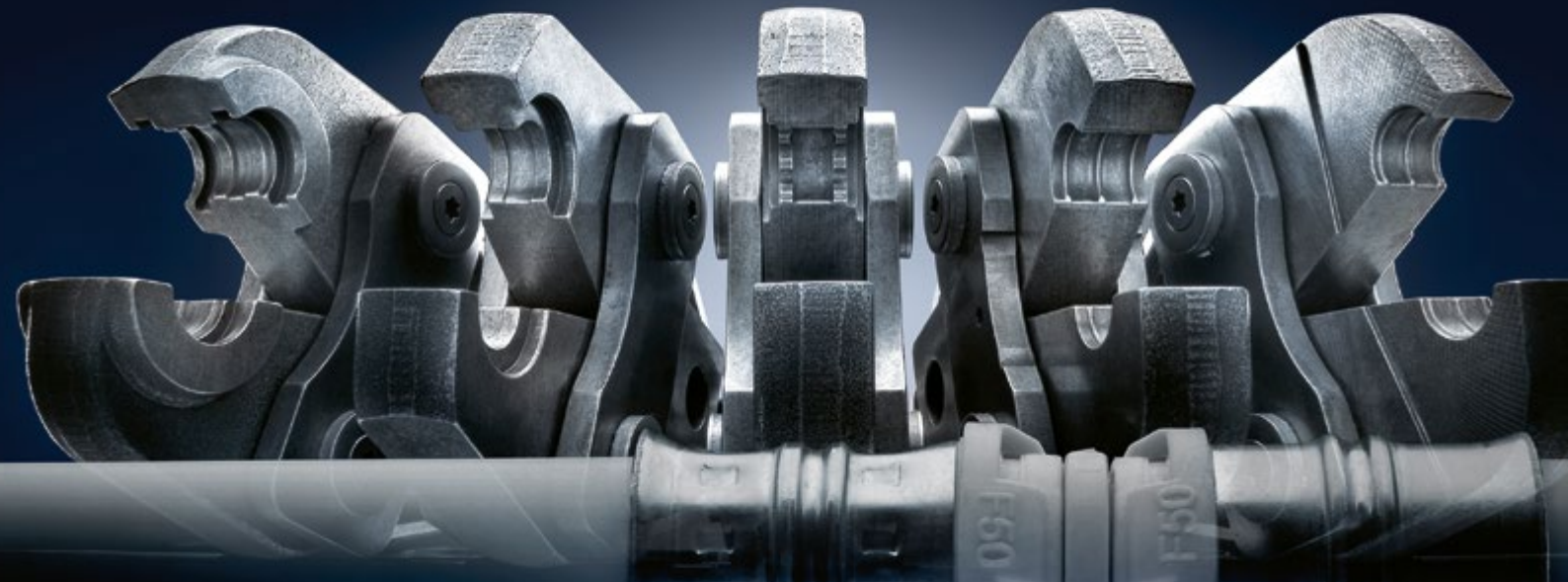
100 % IMPERMEABLE
TO OXYGEN



INCRUSTATION-
FREE



IDEAL
WALL THICKNESS



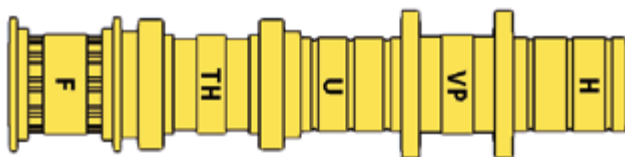
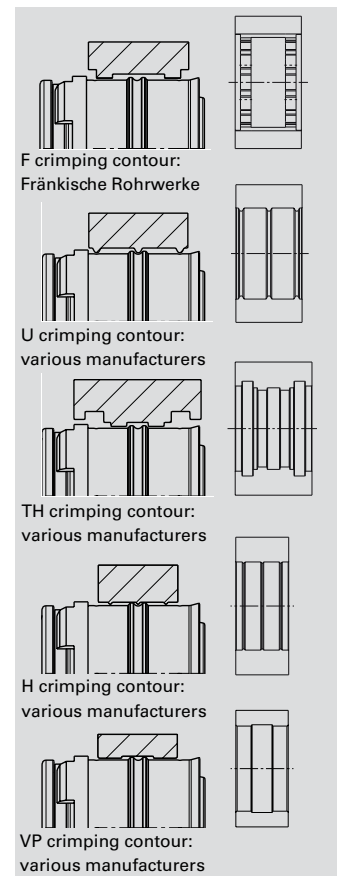
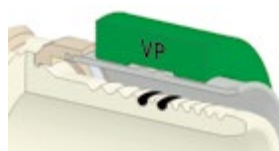
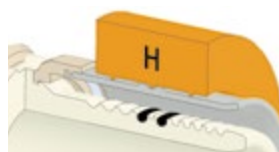
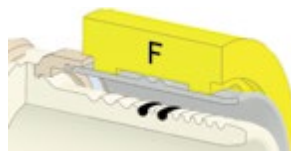
alplex F50 PROFI® – crimping jaw flexibility

Your crimping jaw fits

FRÄNKISCHE offers the innovative advantage of five possible crimping contours with alplex F50 PROFI. All alplex F50 PROFI fittings can be crimped using the F contour as well as the U, TH, H and VP contours – using all conventional and certified crimping tools. A clear advantage for the installer, who, in most cases, does not need to purchase new tools.

Easy installation

1. Cutting the pipe to length with a pipe cutter to ensure a cut at a right angle.
2. Calibrating and deburring the pipe end with an alplex deburring tool 16–32 mm.
3. Fixing the fitting by inserting the base body into the end of the pipe. Verification through the inspection hole in the fixation ring.
4. Crimping pipe and fitting with a crimping tool.

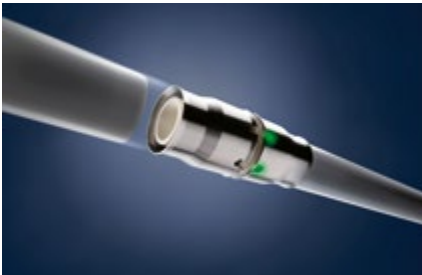


Thanks to the smart crimping jaw check, the installer can quickly and easily recognise whether the crimping jaw he has at hand is compatible with the alplex F50 PROFI fitting. Open the crimping jaw, insert the check into one half of the jaw – now you can see if the "old tool" can be used for crimping.



System compatibility

alpex-plus



Innovative PPSU push-fit fitting in dimensions of 16 to 26 mm with stainless steel glove.

- Optical indicator for verifying correct positioning
- Ideal for confined construction site situations
- Easy to insulate due to its slim design

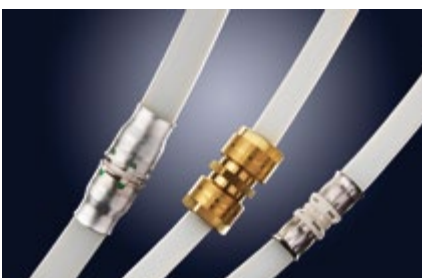
alpex L



Multilayer composite pipe system in large dimensions of 40 to 75 mm for drinking water and heating installations.

- With leak function
- Large inspection hole for verifying correct positioning
- Ideal addition to alpex F50 PROFI

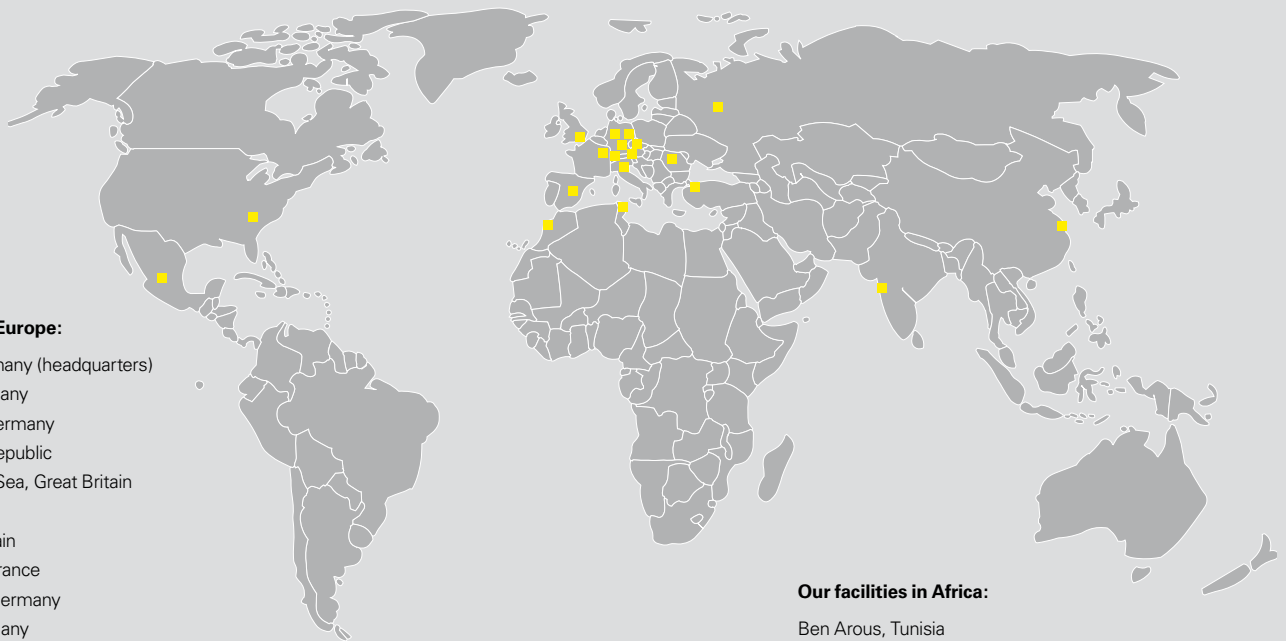
ff-therm



Flexible PE-Xa/PE-RT pipe solutions with diffusion barrier for heating installations

- Suited for all crimp fittings and alpex-plus push-fit fittings in dimensions of 16 x 2 and 20 x 2 mm
- Highest possible durability and wear resistance
- Application class 4/5

Rooted in Königsberg – globally successful!



Our facilities in Europe:

Königsberg, Germany (headquarters)
 Bückeberg, Germany
 Schwarzheide, Germany
 Okříšky, Czech Republic
 St.-Leonards-on-Sea, Great Britain
 Moscow, Russia
 Yeles/Toledo, Spain
 Torcy-le-Grand, France
 Ebersbach/Fils, Germany
 Hermsdorf, Germany
 Mönchaltorf, Switzerland
 Milan, Italy
 Istanbul, Turkey
 Cluj, Romania
 Wels, Austria

Our facilities in Asia:

Anting/Shanghai, China
 Pune, India

Our facilities in Africa:

Ben Arous, Tunisia
 Casablanca, Morocco

Our facilities in North America and Mexico:

Anderson, USA
 Guanajuato, Mexico

FRÄNKISCHE is an innovative, growth-oriented, medium-sized family-owned enterprise and industry leader in the design, manufacturing and marketing of technically superior corrugated pipe systems for drainage, electrical, building technology and industrial applications.

We currently employ about 3,000 people worldwide. Both our many years of experience and expertise in plastics pro-

cessing, our consulting services and the large array of products are highly valued by our customers.

FRÄNKISCHE is a third generation family owned business that was established in 1906 and is now run by Otto Kirchner. Today, we are globally represented with production facilities and sales offices. The proximity to our customers enables us to develop products and solutions

that are perfectly tailored to our customers' needs. Our action and business philosophy focus on our customers and their needs and requirements for our products.

FRÄNKISCHE – Your partner for sophisticated and technologically advanced solutions.