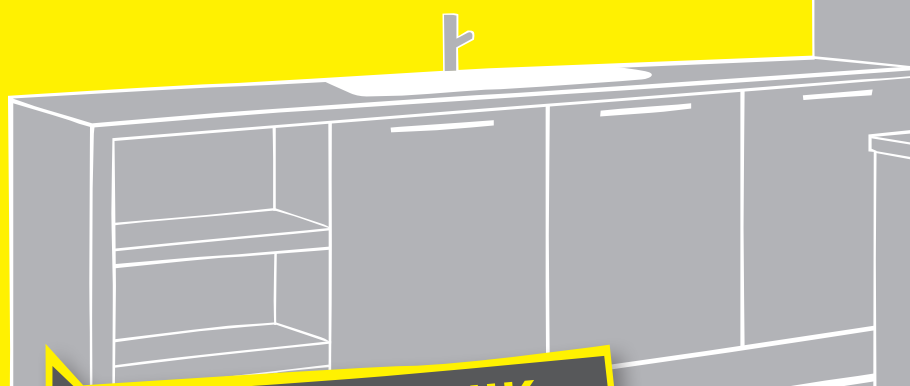
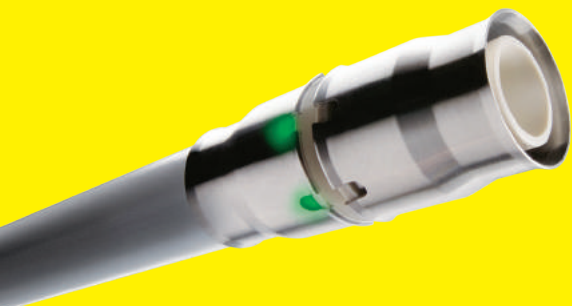
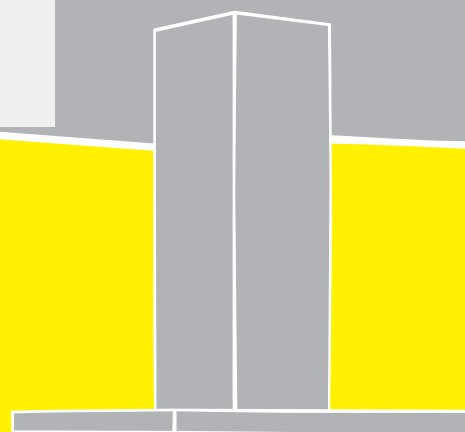


alpex-plus®

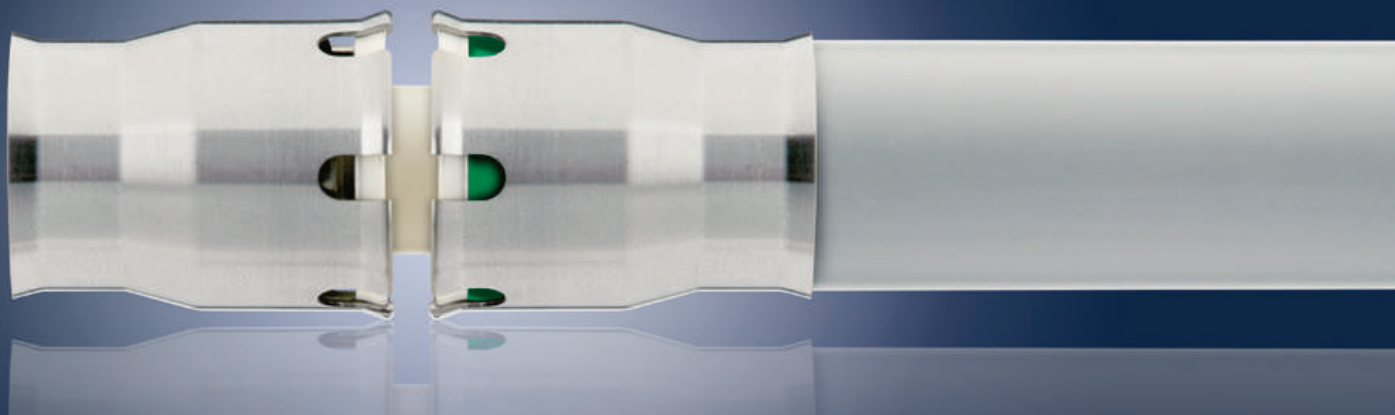
**The innovative push-fit fitting
in dimensions of 16, 20 and 26 mm**



**HAUSTECHNIK
VOM
SPEZIALISTEN**



**DRAINAGE SYSTEMS
ELECTRICAL SYSTEMS
BUILDING TECHNOLOGY
INDUSTRIAL PRODUCTS**



alpex-plus - simply more fitting

alpex-plus fitting



Superior quality

The base body of the alpex-plus fittings is made of high-performance PPSU (polyphenylsulfone) plastic - a material which has been tested in space and offers extremely good impact strength while being entirely non-toxic.

Threaded adaptors and screw fittings with base bodies made of dezincification-resistant brass complete the product range. FRÄNKISCHE uses stainless steel for the sleeve and the fastening element, which makes alpex-plus particularly suited for heavy-duty applications.

- Ideally suited for narrow and confined installation spaces
- Easy visual inspection of the established connection by means of the green indicator
- Time and cost saving due to fewer processing steps
- Easy to insulate due to the extra slim design
- Universal fittings for drinking water and heating installations
- Dimensions of 16 and 20 mm can be released prior to pressure testing and then reused

Compatibility

alpex-plus, the innovative push-fit fitting by FRÄNKISCHE in dimensions of 16 mm, 20 mm and 26 mm, distinguishes itself by the well thought-out, functional design, providing added value to the installer.

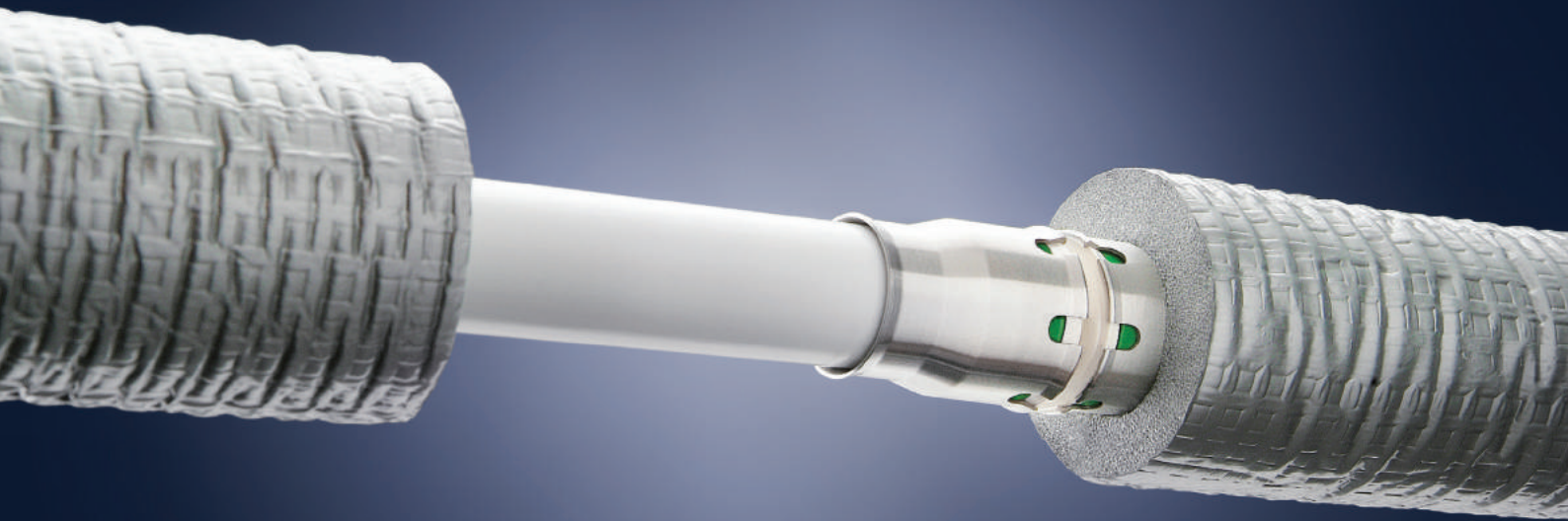
The possibility to use alpex-plus push-fit fittings in the tried-and-tested alpex system for plumbing and heating installations provides the installer with more application options and flexibility at the construction site.

Controlled safety



kiwa





Technical data

alpex-plus – connectors		
Dimension [mm]	16 x 2.0 / 20 x 2.0 / 26 x 3.0	
Type	Threadless	Threaded connectors
Material	Polyphenylsulfone (PPSU)	Dezincification-resistant brass
Material class	E acc. to DIN EN 13501-1	
Use	Heating and drinking water installations	
Sleeve/fastening element	Stainless steel	
Leak function acc. to W534	No - green indicator for verifying correct positioning	
Speciality	Can be removed during installation in dimensions of 16 x 2.0 and 20 x 2.0 mm without being damaged; fitting can be reused.	



Benefits at a glance

The alpex-plus system is extremely durable and convincing due to its high load capacity and hygienic safety. All flow-optimised pipes and fittings can be installed in a space-saving

manner, are easy to insulate and resistant to hot water of up to 95 °C. Utmost user-friendliness and efficient operation coupled with quality and highest possible safety – these are

the goals we pursue and guarantee with our ongoing practice-oriented further developments.



COMPLIANCE WITH GERMAN ENVIRONMENT AGENCY / DRINKING WATER ORDINANCE



INCRUSTATION-FREE



HYGIENICALLY SOUND



SUPERIOR MATERIAL QUALITY

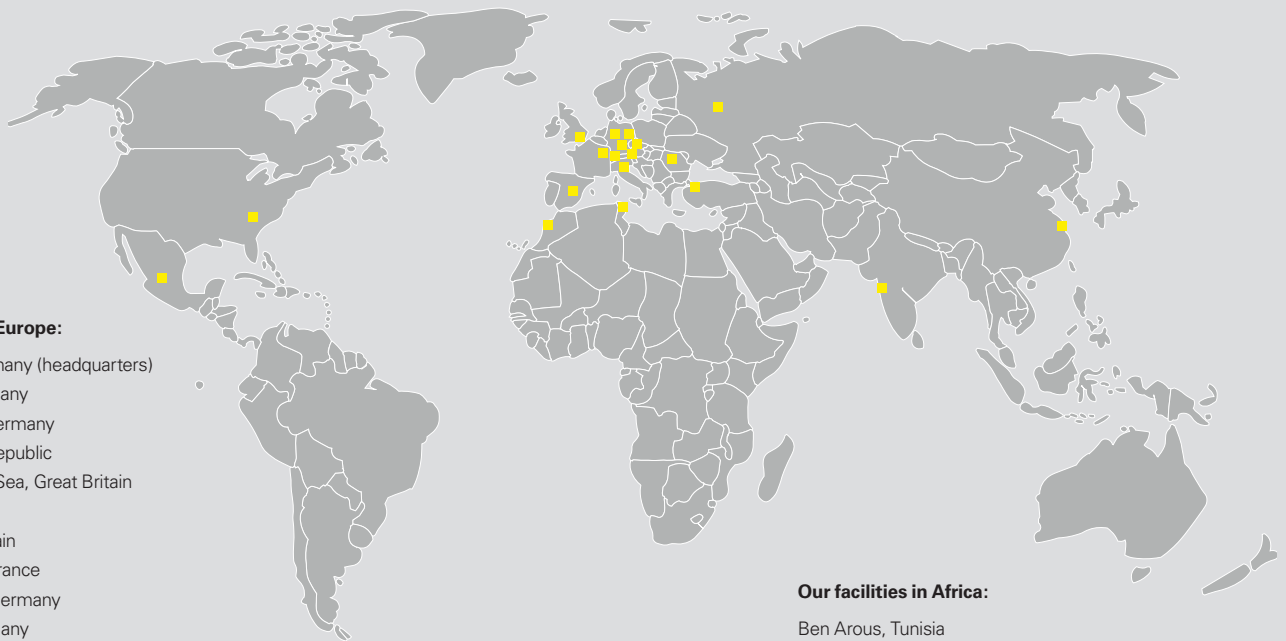


DURABILITY



SYSTEM COMPATIBILITY

Rooted in Königsberg – globally successful!



Our facilities in Europe:

Königsberg, Germany (headquarters)
 Bückeberg, Germany
 Schwarzheide, Germany
 Okříšky, Czech Republic
 St.-Leonards-on-Sea, Great Britain
 Moscow, Russia
 Yeles/Toledo, Spain
 Torcy-le-Grand, France
 Ebersbach/Fils, Germany
 Hermsdorf, Germany
 Mönchaltorf, Switzerland
 Milan, Italy
 Istanbul, Turkey
 Cluj, Romania
 Wels, Austria

Our facilities in Asia:

Anting/Shanghai, China
 Pune, India

Our facilities in Africa:

Ben Arous, Tunisia
 Casablanca, Morocco

Our facilities in North America and Mexico:

Anderson, USA
 Guanajuato, Mexico

FRÄNKISCHE is an innovative, growth-oriented, medium-sized family-owned enterprise and industry leader in the design, manufacturing and marketing of technically superior corrugated pipe systems for drainage, electrical, building technology and industrial applications.

We currently employ about 3,500 people worldwide. Both our many years of experience and expertise in plastics pro-

cessing, our consulting services and the large array of products are highly valued by our customers.

FRÄNKISCHE is a third generation family owned business that was established in 1906 and is now run by Otto Kirchner. Today, we are globally represented with production facilities and sales offices. The proximity to our customers enables us to develop products and solutions

that are perfectly tailored to our customers' needs. Our action and business philosophy focus on our customers and their needs and requirements for our products.

FRÄNKISCHE – Your partner for sophisticated and technologically advanced solutions.