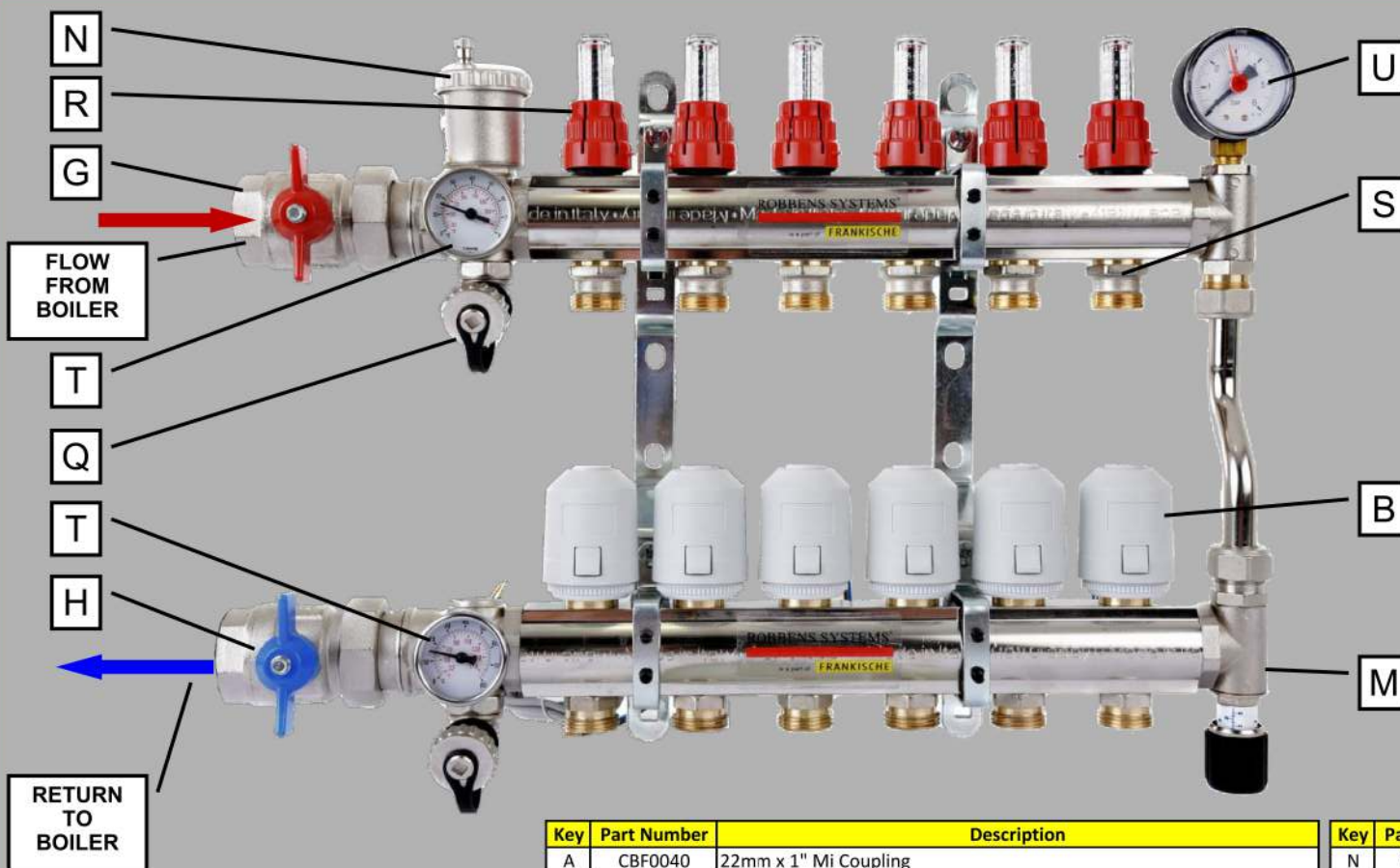


**PREMIUM
MULTIZONE ASSEMBLED MANIFOLD (PMZ-D)
FOR HEATPUMPS**

is a part of **FRÄNKISCHE**

MAB2000 RANGE OF MANIFOLDS - 16.01.18



Heat Pump Manifold & Board Sizes				
Loop No.	W (mm)	H (mm)	D (mm)	Board Size (mm)
2	300	385	120	480x600x15
3	350	385	120	480x600x15
4	400	385	120	600x600x15
5	450	385	120	600x600x15
6	500	385	120	600x600x15
7	550	385	120	800x600x15
8	600	385	120	800x600x15
9	650	385	120	800x600x15
10	700	385	120	800x600x15
11	750	385	120	800x600x15
12	800	385	120	1000x600x15
13	850	385	120	1000x600x15
14	920	385	120	1000x600x15
15	970	385	120	1000x600x15
16	1020	385	120	1200x600x15
17	1070	385	120	1200x600x15
18	1120	385	120	1200x600x15
19	1170	385	120	TBC
20	1220	385	120	TBC

Key	Part Number	Description
A	CBF0040	22mm x 1" Mi Coupling
B	CON0043	2 Wire 230V Actuator NC Normally Closed
C	FAS0026	Socket Cap Screw SS M8 x 20mm
D	FAS0027	Prolonged Tee Nut M8
E	MBB0002	Manifold Mounting Board 600 x 600mm for 4 - 6 ports
F	PAM3006	6 Port Premium Manifold Kit Unassembled
G	PPA0114	1"F x 1½"M Red Ball Valve
H	PPA0115	1"F x 1½"M Blue Ball Valve
I	PPA0118	1½"F x 1"M Soft Seal Fitting
J	PPA0140	½" x 50mm 6 Bar Pressure Gauge With Radial Connection
K	PPA0142	½"M x ¼"F Reducer With O - Ring & Gasket
L	PPA0186	Distribution Kit c/w AAV & Temperature Gauge (2no.)
M	PPA0187	Bypass Differential Valve with Manifold End Caps

Key	Part Number	Description
N	VAP0028	Auto Air Vent
O	PPA0104	Flow Adjuster
P	VAP0032	Valve Insert
Q	501016	Drain & Filling Point
R	PPA0116	Flow Adjuster Seat
S	PPA0117	Flow Valve Seat
T	500071	3/8" Thermostat and Pocket
U		Pressure Gauge